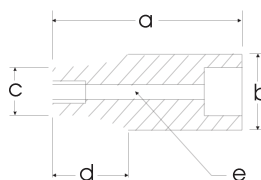


# 3/4" DRIVE SOCKETS & ATTACHMENTS

## 6 Point Deep Length Impact - Black Industrial Finish

| Hex Size | 6 Point Part No. | Overall Length in. a | Drive End in. b | Hex End in. c | Taper Length in. d | Bolt Clearance in. e |
|----------|------------------|----------------------|-----------------|---------------|--------------------|----------------------|
| 9/16     | PL2609           | 3.25                 | 1.6             | 1             | 0.75               | 0.6                  |
| 5/8      | PL2610           | 3.25                 | 1.6             | 1.1           | 0.75               | 0.6                  |
| 11/16    | PL2611           | 3.25                 | 1.6             | 1.1           | 0.75               | 0.6                  |
| 3/4"     | PL2612           | 3.35                 | 1.5             | 1.18          | 1.73               | 0.67                 |
| 13/16"   | PL2613           | 3.35                 | 1.5             | 1.26          | 1.73               | 0.71                 |
| 7/8"     | PL2614           | 3.35                 | 1.5             | 1.34          | 1.73               | 0.79                 |
| 15/16"   | PL2615           | 3.35                 | 1.5             | 1.42          | 1.73               | 0.83                 |
| 1"       | PL2632           | 3.35                 | 1.5             | 1.57          | —                  | 0.91                 |
| 1 1/16"  | PL2634           | 3.35                 | 1.5             | 1.57          | —                  | 1.04                 |
| 1 1/8"   | PL2636           | 3.35                 | 1.65            | 1.65          | —                  | 1.06                 |
| 1 3/16"  | PL2638           | 3.35                 | 1.73            | 1.73          | —                  | 1.1                  |
| 1 1/4"   | PL2640           | 3.35                 | 1.73            | 1.73          | —                  | 1.18                 |
| 1 5/16"  | PL2642           | 3.35                 | 1.73            | 1.85          | —                  | 1.22                 |
| 1 3/8"   | PL2644           | 3.35                 | 1.73            | 1.97          | —                  | 1.3                  |
| 1 7/16"  | PL2646           | 3.35                 | 1.73            | 2.01          | —                  | 1.36                 |
| 1 1/2"   | PL2648           | 3.74                 | 1.73            | 2.09          | —                  | 1.42                 |
| 1 9/16"  | PL2650           | 3.74                 | 1.73            | 2.2           | —                  | 1.48                 |
| 1 5/8"   | PL2652           | 3.74                 | 1.73            | 2.28          | —                  | 1.54                 |
| 1 11/16" | PL2654           | 3.74                 | 1.73            | 2.5           | —                  | 1.61                 |
| 1 3/4"   | PL2656           | 3.74                 | 1.73            | 2.56          | —                  | 1.67                 |
| 1 13/16" | PL2658           | 3.74                 | 1.73            | 2.64          | —                  | 1.69                 |
| 1 7/8"   | PL2660           | 3.74                 | 1.73            | 2.68          | —                  | 1.75                 |
| 1 15/16" | PL2662           | 3.74                 | 1.73            | 2.76          | —                  | 1.77                 |
| 2"       | PL2664           | 3.74                 | 2.13            | 2.8           | —                  | 1.81                 |



Federal Spec. U.S. GGG-W-6660A

## 6 Point Standard Length Impact - Black Industrial Finish

| Hex Size | 6 Point Part No. | Overall Length mm a | Drive End mm b | Hex End mm c | Taper Length mm d | Bolt Clearance mm e |
|----------|------------------|---------------------|----------------|--------------|-------------------|---------------------|
| 17mm     | MP3417H          | 50                  | 38             | 28.5         | 22                | 15                  |
| 18mm     | MP3418H          | 52                  | 38             | 29.5         | 24                | 16                  |
| 19mm     | MP3419H          | 52                  | 38             | 30           | 24                | 17                  |
| 20mm     | MP3420H          | 52                  | 38             | 31           | 24                | 18                  |
| 21mm     | MP3421H          | 52                  | 38             | 32           | 24                | 19                  |
| 22mm     | MP3422H          | 52                  | 38             | 34           | 24                | 20                  |
| 23mm     | MP3423H          | 52                  | 38             | 35           | 24                | 21                  |
| 24mm     | MP3424H          | 52                  | 38             | 36           | 24                | 22                  |
| 25mm     | MP3425H          | 52                  | 38             | 38           | 24                | 23                  |
| 26mm     | MP3426H          | 52                  | 38             | 38           | —                 | 24                  |
| 27mm     | MP3427H          | 52                  | 40             | 40           | —                 | 25                  |
| 28mm     | MP3428H          | 52                  | 42             | 42           | —                 | 26                  |
| 29mm     | MP3429H          | 52                  | 42             | 42           | —                 | 27                  |
| 30mm     | MP3430H          | 52                  | 44             | 44           | —                 | 28                  |
| 31mm     | MP3431H          | 52                  | 44             | 44           | —                 | 29                  |
| 32mm     | MP3432H          | 52                  | 44             | 48           | —                 | 30                  |
| 33mm     | MP3433H          | 56                  | 44             | 49           | —                 | 30                  |
| 34mm     | MP3434H          | 56                  | 44             | 50           | —                 | 30                  |
| 35mm     | MP3435H          | 56                  | 44             | 51           | —                 | 30                  |
| 36mm     | MP3436H          | 56                  | 44             | 53           | —                 | 32                  |
| 38mm     | MP3438H          | 56                  | 44             | 55           | —                 | 32                  |
| 40mm     | MP3440H          | 58                  | 44             | 57           | —                 | 36                  |
| 41mm     | MP3441H          | 58                  | 44             | 59           | —                 | 37                  |
| 42mm     | MP3442H          | 58                  | 44             | 61           | —                 | 38                  |
| 43mm     | MP3443H          | 63                  | 44             | 63           | —                 | 39                  |
| 46mm     | MP3446H          | 63                  | 44             | 67           | —                 | 42                  |
| 50mm     | MP3450H          | 72                  | 54             | 71           | —                 | 45                  |

