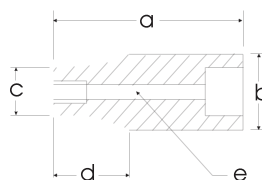


# 3/4" DRIVE SOCKETS & ATTACHMENTS

## 6 Point Deep Length Impact - Black Industrial Finish

Hex Size	6 Point Part No.	Overall Length in. a	Drive End in. b	Hex End in. c	Taper Length in. d	Bolt Clearance in. e
9/16	PL2609	3.25	1.6	1	0.75	0.6
5/8	PL2610	3.25	1.6	1.1	0.75	0.6
11/16	PL2611	3.25	1.6	1.1	0.75	0.6
3/4"	PL2612	3.35	1.5	1.18	1.73	0.67
13/16"	PL2613	3.35	1.5	1.26	1.73	0.71
7/8"	PL2614	3.35	1.5	1.34	1.73	0.79
15/16"	PL2615	3.35	1.5	1.42	1.73	0.83
1"	PL2632	3.35	1.5	1.57	—	0.91
1 1/16"	PL2634	3.35	1.5	1.57	—	1.04
1 1/8"	PL2636	3.35	1.65	1.65	—	1.06
1 3/16"	PL2638	3.35	1.73	1.73	—	1.1
1 1/4"	PL2640	3.35	1.73	1.73	—	1.18
1 5/16"	PL2642	3.35	1.73	1.85	—	1.22
1 3/8"	PL2644	3.35	1.73	1.97	—	1.3
1 7/16"	PL2646	3.35	1.73	2.01	—	1.36
1 1/2"	PL2648	3.74	1.73	2.09	—	1.42
1 9/16"	PL2650	3.74	1.73	2.2	—	1.48
1 5/8"	PL2652	3.74	1.73	2.28	—	1.54
1 11/16"	PL2654	3.74	1.73	2.5	—	1.61
1 3/4"	PL2656	3.74	1.73	2.56	—	1.67
1 13/16"	PL2658	3.74	1.73	2.64	—	1.69
1 7/8"	PL2660	3.74	1.73	2.68	—	1.75
1 15/16"	PL2662	3.74	1.73	2.76	—	1.77
2"	PL2664	3.74	2.13	2.8	—	1.81



Federal Spec. U.S. GGG-W-6660A

## 6 Point Standard Length Impact - Black Industrial Finish

Hex Size	6 Point Part No.	Overall Length mm a	Drive End mm b	Hex End mm c	Taper Length mm d	Bolt Clearance mm e
17mm	MP3417H	50	38	28.5	22	15
18mm	MP3418H	52	38	29.5	24	16
19mm	MP3419H	52	38	30	24	17
20mm	MP3420H	52	38	31	24	18
21mm	MP3421H	52	38	32	24	19
22mm	MP3422H	52	38	34	24	20
23mm	MP3423H	52	38	35	24	21
24mm	MP3424H	52	38	36	24	22
25mm	MP3425H	52	38	38	24	23
26mm	MP3426H	52	38	38	—	24
27mm	MP3427H	52	40	40	—	25
28mm	MP3428H	52	42	42	—	26
29mm	MP3429H	52	42	42	—	27
30mm	MP3430H	52	44	44	—	28
31mm	MP3431H	52	44	44	—	29
32mm	MP3432H	52	44	48	—	30
33mm	MP3433H	56	44	49	—	30
34mm	MP3434H	56	44	50	—	30
35mm	MP3435H	56	44	51	—	30
36mm	MP3436H	56	44	53	—	32
38mm	MP3438H	56	44	55	—	32
40mm	MP3440H	58	44	57	—	36
41mm	MP3441H	58	44	59	—	37
42mm	MP3442H	58	44	61	—	38
43mm	MP3443H	63	44	63	—	39
46mm	MP3446H	63	44	67	—	42
50mm	MP3450H	72	54	71	—	45

