

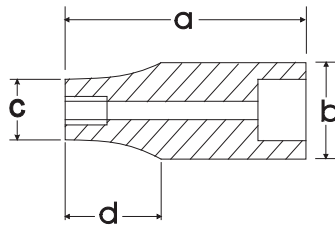


Hand Sockets

SAE Standard Chrome Sockets

Size	Drive		Overall Length (a) inches	Drive End (b) inches	Hex End (c) inches	Taper Length (d) inches	Net Weight (lbs)
	6 POINT	12 POINT					
1/4"	D008308	D009408	1.10	0.66	0.39	0.47	0.05
5/16"	D008310	D009410	1.10	0.66	0.47	0.47	0.05
3/8"	D008312	D009412	1.10	0.66	0.54	0.47	0.06
7/16"	D008314	D009414	1.10	0.66	0.63	0.47	0.06
1/2"	D008316	D009416	1.10	0.70	0.70	0.00	0.07
9/16"	D008318	D009418	1.10	0.78	0.78	0.00	0.08
5/8"	D008320	D009420	1.10	0.86	0.86	0.00	0.10
11/16"	D008322	D009422	1.18	0.94	0.94	0.00	0.10
3/4"	D008324	D009424	1.18	1.02	1.02	0.00	0.12
13/16"	D008326	D009426	1.18	1.09	1.09	0.00	0.16
7/8"	D008328	D009428	1.18	1.17	1.17	0.00	0.16
15/16"	D008330	D009430	1.18	1.25	1.25	0.00	0.19
1"	D008332	D009432	1.18	1.33	1.33	0.00	0.21

* Meets A.N.S.I. standards



SAE Deep Chrome Sockets

Size	Drive		Overall Length (a) inches	Drive End (b) inches	Hex End (c) inches	Taper Length (d) inches	Net Weight (lbs)
	6 POINT	12 POINT					
1/4"	D008508	D009608	2.48	0.66	0.39	1.50	0.09
5/16"	D008510	D009610	2.48	0.66	0.47	1.50	0.10
3/8"	D008512	D009612	2.48	0.66	0.54	1.50	0.11
7/16"	D008514	D009614	2.48	0.66	0.63	1.50	0.11
1/2"	D008516	D009616	2.48	0.74	0.74	0.00	0.11
9/16"	D008518	D009618	2.48	0.78	0.78	0.00	0.16
5/8"	D008520	D009620	2.48	0.86	0.86	0.00	0.19
11/16"	D008522	D009622	2.48	0.94	0.94	0.00	0.23
3/4"	D008524	D009624	2.48	1.02	1.02	0.00	0.27
13/16"	D008526	D009626	2.48	1.09	1.09	0.00	0.43
7/8"	D008528	D009628	2.48	1.17	1.17	0.00	0.49
15/16"	D008530	D009630	2.48	1.25	1.25	0.00	0.54
1"	D008532	D009632	2.48	1.33	1.33	0.00	0.57

* Meets A.N.S.I. standards

