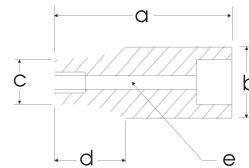


# 3/4" DRIVE SOCKETS & ATTACHMENTS

## 6 Point Standard Length Impact - Black Industrial Finish

Hex Size	6 Point Part No.	Overall Length in. a	Drive End in. b	Hex End in. c	Taper Length in. d	Bolt Clearance in. e
9/16"	P2609	1.97	1.5	1	0.87	0.47
5/8"	P2610	1.97	1.5	1.08	0.87	0.51
11/16"	P2611	1.97	1.5	1.14	0.87	0.59
3/4"	P2612	1.97	1.5	1.18	0.87	0.67
13/16"	P2613	2.05	1.5	1.26	0.87	0.71
7/8"	P2614	2.05	1.5	1.34	0.87	0.79
15/16"	P2615	2.05	1.5	1.42	0.87	0.83
1"	P2632	2.05	1.5	1.57	—	0.91
1 1/16"	P2634	2.05	1.5	1.57	—	1.02
1 1/8"	P2636	2.05	1.65	1.65	—	1.02
1 3/16"	P2638	2.05	1.73	1.73	—	1.1
1 1/4"	P2640	2.05	1.73	1.73	—	1.18
1 5/16"	P2642	2.2	1.73	1.85	—	1.22
1 3/8"	P2644	2.2	1.73	1.97	—	1.3
1 7/16"	P2646	2.2	1.73	2	—	1.34
1 1/2"	P2648	2.2	1.73	2.09	—	1.42
1 9/16"	P2650	2.44	1.73	2.2	—	1.48
1 5/8"	P2652	2.44	1.73	2.28	—	1.54
1 11/16"	P2654	2.44	1.73	2.5	—	1.61
1 3/4"	P2656	2.44	1.73	2.56	—	1.67
1 13/16"	P2658	2.68	1.73	2.64	—	1.69
1 7/8"	P2660	2.68	1.73	2.68	—	1.75
1 15/16"	P2662	2.76	1.73	2.76	—	1.77
2"	P2664	2.83	2.13	1.8	—	1.81
2 1/16"	P2666	2.83	2.13	2.91	—	1.85
2 1/8"	P2668	2.83	2.13	3.03	—	1.93
2 3/16"	P2670	2.91	2.13	3.03	—	1.99
2 1/4"	P2672	2.91	2.13	3.15	—	1.05
2 5/16"	P2674	2.95	2.13	3.23	—	2.11
2 3/8"	P2676	2.95	2.13	3.31	—	2.17



Federal Spec. U.S. GGG-W-660A

## 8 Point Standard Length Impact - Black Industrial Finish

Hex Size	8 Point Part No.	Overall Length in. a	Drive End in. b	Hex End in. c	Taper Length in. d	Bolt Clearance in. e
3/4"	P6-824	2.05	1.6	1.60	—	0.67
13/16"	P6-826	2.05	1.6	1.60	—	0.71
7/8"	P6-828	2.05	1.73	1.76	—	0.79
15/16"	P6-830	2.05	1.73	1.76	—	0.83
1"	P6-832	2.12	1.73	2.00	—	0.91
1 1/16"	P6-834	2.20	1.73	2.08	—	1.02
1 1/8"	P6-836	2.27	1.73	2.27	—	1.02
1 3/16"	P6-838	2.35	1.73	2.36	—	1.1
1 1/4"	P6-840	2.35	1.73	2.36	—	1.18
1 5/16"	P6-842	2.43	1.73	2.50	—	1.22



Federal Spec. U.S. GGG-W-660A