



**1** 9902  
**240mm VALVE GRINDER**

Recycled PVC shaft with 19mm and 22mm diameter rubber suction ends. Display packed.

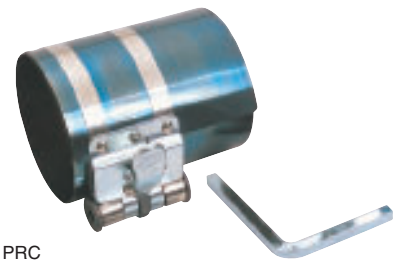
Stock No.  
10409



**2** 9902/P  
**VALVE GRINDING KIT**

Recycled PVC shaft 240mm long with 19mm and 22mm diameter rubber suction ends and pots of genuine carborundum fine and coarse paste. Display packed.

Stock No.  
72891



**3** PRC  
**PISTON RING COMPRESSORS**

Spring steel with steel adjusting key. Display packed.

Stock No.	Capacity	Depth
51844	45-75mm	50mm
51845	60-100mm	75mm
51846	75-140mm	75mm
51847	70-150mm	100mm

**4** CH25/57  
**25-57mm CYLINDER HONE**

For use on small bore cylinders i.e. motor cycles etc. with capacities between 25 and 57mm. The flexible drive shaft allows easy alignment whilst working, with the honing pressure adjustable to suit the particular application. Suitable for use with an electric or air drill, the maximum working speed is 2400r/min. Overall length 210mm. Supplied with 220 grit stone set, which are also available separately - Stock No. 56247. Display packed.

Stock No.	Description
56244	Cylinder Hone
56247	Stone Set 220 grit

**5** CH51/177  
**51-177mm CYLINDER HONE**

For use on cylinders with capacities between 51 and 177mm i.e. cars, vans, trucks, marine and industrial applications. The flexible drive shaft allows easy alignment whilst working, with the honing pressure adjustable to suit the particular application. Suitable for use with an electric or air drill, the maximum working speed is 2400r/min. Supplied with 180 grit stone set, which is also available separately as are other grades. Overall length 300mm. Display packed.

Stock No.	Description
56246	Cylinder Hone
56248	Stone Set - 280 grit
56249	Stone Set - 180 grit
56250	Stone Set - 120 grit



**6** CHS2  
**CYLINDER HEAD STAND KIT (2 PIECE)**

Securely supports cylinder heads for most forms of service and repair applications. Heavy duty mild steel with zinc plated finish. Display packed.

Stock No.  
89767



**7** STETH1  
**MECHANIC'S STETHOSCOPE**

Suitable for detecting faults in engines, bearings and other moving parts. Supplied with two probes 290mm long. Display packed.

Stock No.  
54503

