



**1 T104A**  
**GENERAL PURPOSE TROWEL**  
 Polished and lacquered carbon steel blade, fusion welded with five rivets to the moulded polypropylene handle. Display packed.

Stock No.	Length	Width
67143	265mm	115mm



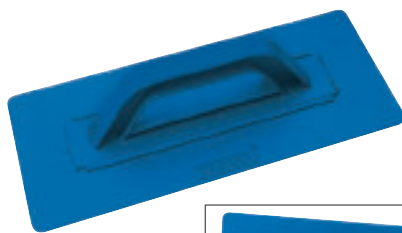
**2 T105A**  
**ADHESIVE SPREADING TROWEL**  
 Polished and lacquered carbon steel blade, serrated on two edges and fusion welded with five rivets to the moulded polypropylene handle. Display packed.

Stock No.	Length	Width
67144	265mm	115mm



**3 T106**  
**POLYURETHANE FLOATS**  
 Lightweight general purpose float manufactured from rigid polyurethane foam. Sold loose.

Stock No.	Length	Width
13411	280mm	140mm
13412	320mm	180mm



**4 T107**  
**PLASTERING FLOAT**  
 Manufactured from high impact polystyrene making it suitable for heavy duty work. Will outlast conventional polyurethane models. Sold loose.

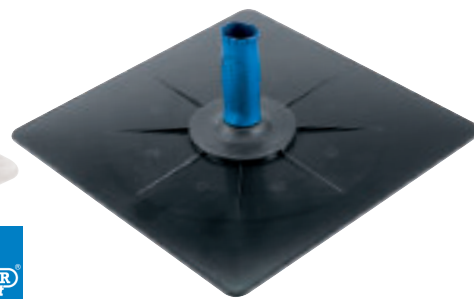
Stock No.	Length	Width
22333	280mm	110mm

**NEW**



**5 PHW**  
**SOFT GRIP ALUMINIUM PLASTERERS HAWK**  
*Expert Quality*, manufactured from sheet aluminium with a detachable soft grip handle for user comfort and callous protector.

Stock No.	Size	Thickness
81314	300mm <sup>2</sup>	1.8mm



**6 9025**  
**ABS PLASTERERS HAWK**  
 Rigid ABS and handle with callous protector. Display packed.

Stock No.	Length	Width
40938	330mm	330mm

## PLASTERER'S DARBY AND FEATHEREDGES



**7 AD**  
**1200mm PLASTERER'S DARBY**  
 For final surface finishing. Extruded aluminium with two handles. Sold loose.  
**Minimum order two or multiples thereof**

Stock No.
89711



**8 PD**  
**POLYURETHANE PLASTERER'S DARBY**  
 Made from polyurethane with a raised grip perfect for creating a level finish over a bigger area.

Stock No.	Size
15070	1.2M



**9**  
**PLASTERER'S FEATHEREDGES**  
 Tapered edge for smoothing and straightening plasterwork. Flat edge for tamping and smoothing concrete. Lightweight aluminium. Sold loose.  
**Minimum order two of the same size or multiples thereof**

Stock No.	Part No.	Dimensions L x W
89713	FE1200	1200 x 100mm
89712	FE1800	1800 x 100mm