

1

### 1/4" HEX. PLAIN SLOT E SHANK INSERT BITS

Chrome vanadium steel hardened, tempered with a shot blasted finish. Supplied in 1, 2, 5 or 10's. Display packed.

| Stock No. | Size  | Bit Length | Bits per pack |
|-----------|-------|------------|---------------|
| 63999     | 3.0mm | 25mm       | 5             |
| 64008     | 4.5mm | 25mm       | 5             |
| 64009     | 5.5mm | 25mm       | 5             |
| 64011     | 6.0mm | 25mm       | 5             |
| 64012     | 6.5mm | 25mm       | 5             |
| 64013     | 8.0mm | 25mm       | 5             |
| 64024     | 3.0mm | 25mm       | 10            |
| 64027     | 4.5mm | 25mm       | 10            |
| 64028     | 5.5mm | 25mm       | 10            |
| 64031     | 6.0mm | 25mm       | 10            |
| 64034     | 6.5mm | 25mm       | 10            |
| 64046     | 8.0mm | 25mm       | 10            |
| 64088     | 3.0mm | 50mm       | 2             |
| 64089     | 4.5mm | 50mm       | 2             |
| 64094     | 5.5mm | 50mm       | 2             |
| 64096     | 6.0mm | 50mm       | 2             |
| 64103     | 6.5mm | 50mm       | 2             |
| 64226     | 8.0mm | 50mm       | 2             |
| 64267     | 3.0mm | 50mm       | 5             |
| 64270     | 4.5mm | 50mm       | 5             |
| 64272     | 5.5mm | 50mm       | 5             |
| 64273     | 6.0mm | 50mm       | 5             |
| 64276     | 6.5mm | 50mm       | 5             |
| 64280     | 8.0mm | 50mm       | 5             |
| 64292     | 3.0mm | 75mm       | 2             |
| 64295     | 4.5mm | 75mm       | 2             |
| 64296     | 5.5mm | 75mm       | 2             |
| 64308     | 6.0mm | 75mm       | 2             |
| 64309     | 6.5mm | 75mm       | 2             |
| 64310     | 8.0mm | 75mm       | 2             |
| 64341     | 3.0mm | 100mm      | 1             |
| 64344     | 4.5mm | 100mm      | 1             |
| 64345     | 5.5mm | 100mm      | 1             |
| 64347     | 6.0mm | 100mm      | 1             |
| 64351     | 6.5mm | 100mm      | 1             |
| 64358     | 8.0mm | 100mm      | 1             |



2

### 1/4" HEX. CROSS SLOT E SHANK INSERT BITS

Chrome vanadium steel hardened, tempered with a shot blasted finish. Supplied in 1, 2, 5 or 10's. Display packed.

| Stock No. | Size | Bit Length | Bits per Pack |
|-----------|------|------------|---------------|
| 64017     | No.1 | 25mm       | 5             |
| 64018     | No.2 | 25mm       | 5             |
| 64023     | No.3 | 25mm       | 5             |
| 64060     | No.1 | 25mm       | 10            |
| 64072     | No.2 | 25mm       | 10            |
| 64087     | No.3 | 25mm       | 10            |
| 64232     | No.1 | 50mm       | 2             |
| 64237     | No.2 | 50mm       | 2             |
| 64241     | No.3 | 50mm       | 2             |
| 64287     | No.1 | 50mm       | 5             |
| 64288     | No.2 | 50mm       | 5             |
| 64290     | No.3 | 50mm       | 5             |
| 64314     | No.1 | 75mm       | 2             |
| 64315     | No.2 | 75mm       | 2             |
| 64316     | No.3 | 75mm       | 2             |
| 64364     | No.1 | 100mm      | 1             |
| 64365     | No.2 | 100mm      | 1             |
| 64366     | No.3 | 100mm      | 1             |



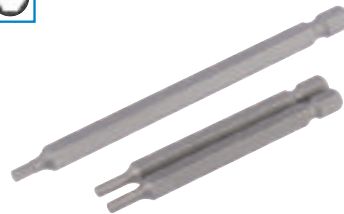
3

### 1/4" HEX. PZ TYPE E SHANK INSERT BITS

**PZ TYPE products are compatible with \*Pozidriv®/Supadriv® fixing systems**

Chrome vanadium steel hardened, tempered with a shot blasted finish. Supplied in 1, 2, 5 or 10's. Display packed.

| Stock No. | Size | Bit Length | Bits per pack |
|-----------|------|------------|---------------|
| 64014     | No.1 | 25mm       | 5             |
| 64015     | No.2 | 25mm       | 5             |
| 64016     | No.3 | 25mm       | 5             |
| 64047     | No.1 | 25mm       | 10            |
| 64048     | No.2 | 25mm       | 10            |
| 64057     | No.3 | 25mm       | 10            |
| 64227     | No.1 | 50mm       | 2             |
| 64228     | No.2 | 50mm       | 2             |
| 64229     | No.3 | 50mm       | 2             |
| 64281     | No.1 | 50mm       | 5             |
| 64283     | No.2 | 50mm       | 5             |
| 64286     | No.3 | 50mm       | 5             |
| 64311     | No.1 | 75mm       | 2             |
| 64312     | No.2 | 75mm       | 2             |
| 64313     | No.3 | 75mm       | 2             |
| 64361     | No.1 | 100mm      | 1             |
| 64362     | No.2 | 100mm      | 1             |
| 64363     | No.3 | 100mm      | 1             |

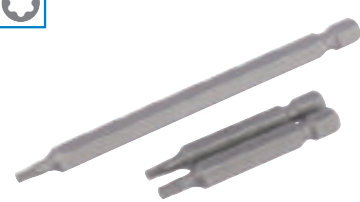


4

### 1/4" HEX. HEXAGONAL E SHANK INSERT BITS

Chrome vanadium steel hardened, tempered with shot blast finish. Supplied in 1 or 2's. Display packed.

| Stock No. | Size  | Bit Length | Bits per pack |
|-----------|-------|------------|---------------|
| 63944     | 1.5mm | 25mm       | 2             |
| 63945     | 2.0mm | 25mm       | 2             |
| 63961     | 2.5mm | 25mm       | 2             |
| 63962     | 3.0mm | 25mm       | 2             |
| 63982     | 4.0mm | 25mm       | 2             |
| 63990     | 5.0mm | 25mm       | 2             |
| 63998     | 6.0mm | 25mm       | 2             |
| 64243     | 1.5mm | 50mm       | 2             |
| 64244     | 2.0mm | 50mm       | 2             |
| 64246     | 2.5mm | 50mm       | 2             |
| 64253     | 3.0mm | 50mm       | 2             |
| 64254     | 4.0mm | 50mm       | 2             |
| 64255     | 5.0mm | 50mm       | 2             |
| 64259     | 6.0mm | 50mm       | 2             |
| 64317     | 1.5mm | 75mm       | 2             |
| 64318     | 2.0mm | 75mm       | 2             |
| 64319     | 2.5mm | 75mm       | 2             |
| 64320     | 3.0mm | 75mm       | 2             |
| 64321     | 4.0mm | 75mm       | 2             |
| 64322     | 5.0mm | 75mm       | 2             |
| 64340     | 6.0mm | 75mm       | 2             |
| 64369     | 1.5mm | 100mm      | 1             |
| 64370     | 2.0mm | 100mm      | 1             |
| 64371     | 2.5mm | 100mm      | 1             |
| 64372     | 3.0mm | 100mm      | 1             |
| 64373     | 4.0mm | 100mm      | 1             |
| 64374     | 5.0mm | 100mm      | 1             |
| 64375     | 6.0mm | 100mm      | 1             |



5

### 1/4" HEX. DRAPER TX-STAR® E SHANK INSERT BITS

**Draper TX-STAR® products are compatible with †Torx fixing systems**

Chrome vanadium steel hardened, tempered with shot blast finish. Supplied in 1 or 2's. Display packed.

| Stock No. | Size | Bit Length | Bits per Pack |
|-----------|------|------------|---------------|
| 66338     | T6   | 25mm       | 2             |
| 66421     | T7   | 25mm       | 2             |
| 66426     | T8   | 25mm       | 2             |
| 66427     | T9   | 25mm       | 2             |
| 66428     | T10  | 25mm       | 2             |
| 66429     | T15  | 25mm       | 2             |
| 66430     | T20  | 25mm       | 2             |
| 66431     | T25  | 25mm       | 2             |
| 66434     | T27  | 25mm       | 2             |
| 66435     | T30  | 25mm       | 2             |
| 66437     | T40  | 25mm       | 2             |
| 66481     | T6   | 50mm       | 2             |
| 66483     | T7   | 50mm       | 2             |
| 66484     | T8   | 50mm       | 2             |
| 66485     | T9   | 50mm       | 2             |
| 66486     | T10  | 50mm       | 2             |
| 66487     | T15  | 50mm       | 2             |
| 66488     | T20  | 50mm       | 2             |
| 66489     | T25  | 50mm       | 2             |
| 66490     | T27  | 50mm       | 2             |
| 66491     | T30  | 50mm       | 2             |
| 66624     | T40  | 50mm       | 2             |
| 66827     | T6   | 75mm       | 2             |
| 66829     | T7   | 75mm       | 2             |
| 66830     | T8   | 75mm       | 2             |
| 66843     | T9   | 75mm       | 2             |
| 66845     | T10  | 75mm       | 2             |
| 66847     | T15  | 75mm       | 2             |
| 66848     | T20  | 75mm       | 2             |
| 66849     | T25  | 75mm       | 2             |
| 66851     | T27  | 75mm       | 2             |
| 66852     | T30  | 75mm       | 2             |
| 66853     | T40  | 75mm       | 2             |
| 66905     | T6   | 100mm      | 1             |
| 66906     | T7   | 100mm      | 1             |
| 66907     | T8   | 100mm      | 1             |
| 66908     | T9   | 100mm      | 1             |
| 66911     | T10  | 100mm      | 1             |
| 66913     | T15  | 100mm      | 1             |
| 66929     | T20  | 100mm      | 1             |
| 66938     | T25  | 100mm      | 1             |
| 66940     | T27  | 100mm      | 1             |
| 67006     | T30  | 100mm      | 1             |
| 67014     | T40  | 100mm      | 1             |

